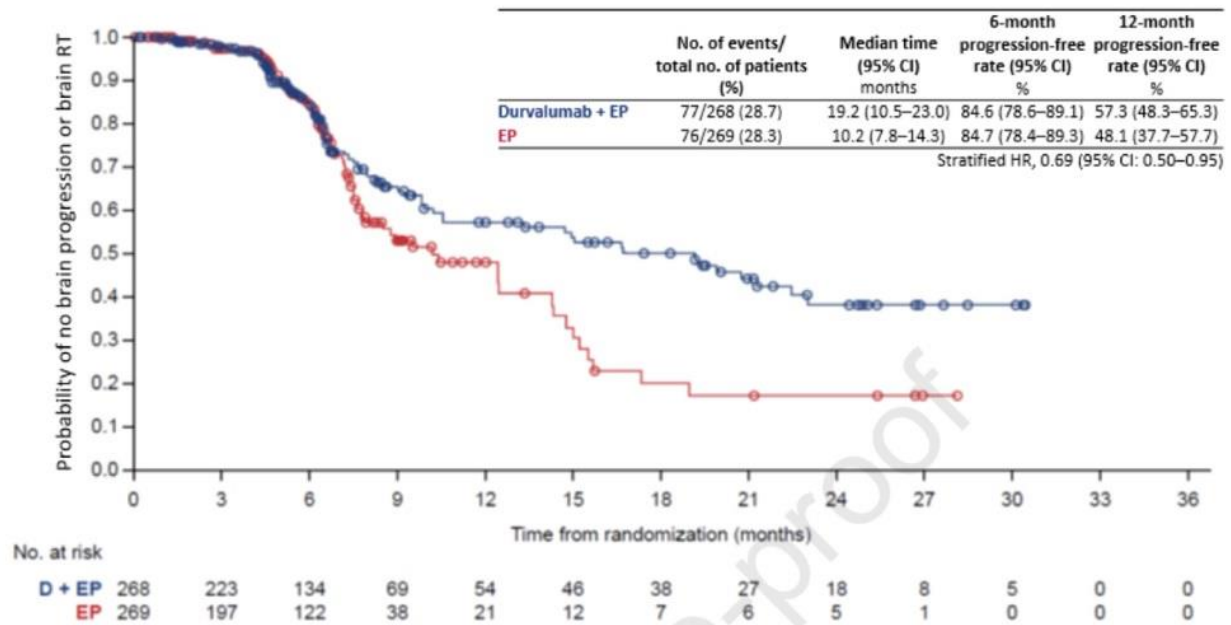


**Figure 2. Time to RECIST-defined disease progression in the brain or brain radiotherapy (excluding PCI) whichever occurred first.**



CI, confidence interval; EP, etoposide and either cisplatin or carboplatin; HR, hazard ratio; RECIST, Response Evaluation Criteria in Solid Tumors; RT, radiotherapy.

Chen Y et al. Brief report: Impact of brain metastases on treatment patterns and outcomes with first-line durvalumab plus platinum-etoposide in extensive-stage SCLC (CASPIAN), JTO Clinical and Research Reports (2022), doi: <https://doi.org/10.1016/j.jtocrr.2022.100330>.